

Bios for Board of Directors 2011

Suzanne Donohue



Suzanne Donohue has been living near the Northwest Branch for 18 years. Her husband, children, and chocolate lab can be found jogging or hiking on the paths. Suzanne realizes how fortunate her kids are to be able grow up so close to the nature of the Northwest Branch. She served as the Springbrook Forest Civic Association president several years ago and coordinated a cleanup Earth Day event. Suzanne has taken many children over the years for educational nature hikes there such as her Girl Scout Troop and invites to the nature-themed birthday parties for her children. She is looking forward to helping spread the word about what we can do to help preserve the beauty of the Northwest Branch and educate the neighbors about the watershed.

Jim Fary



Jim Fary was one of the founding members of NNWB. He is currently a Vice President of NNWB. He lives in the Western part of the watershed in the Bel Pre tributary. He has been interested for many years in remediation of on-going sediment pollution. He documented and reported numerous violations of the sediment control regulations in the construction of the InterCounty Connector. Jim believes that the ICC is the largest contributing polluter of the NW Branch. It will continue to pollute even after construction is complete. Heavy trucks will dump polluting fluids and polluted air into the NWB. Jim promises to continue to monitor the ICC and report all pollution violations. He is a retired government environmental regulation writer attorney and has written many regulations for the US Environmental Protection Agency and the Department of Interior. He is also an active member of other environmental organizations that address pollution problems in the NW Branch of the Anacostia River.

James Graham



James lives in the middle section of the Northwest Branch watershed. He has led cleanups on the Northwest Branch since 2007, at both Burnt Mills and in W. Hyattsville, bringing the power of Boy Scouts to bear on the problem of trash and introducing them to the importance of keeping our waterways clean. He joined the NNWB Board in 2009. James brings experience and outreach ideas from his work at Amnesty International and would like to see NNWB greatly expand its outreach efforts.

Larry Hush



Larry Hush has lived in the Middle Section of the Northwest Branch watershed since 1984. He joined NNWB in December 2008 and became Treasurer in September 2009. He lives in the area of the watershed between Route 29 (Colesville Road) downstream to the Capital Beltway. Since April 2009 his volunteer work and hobby have been as a County Weed Warrior cutting nonnative invasive vines and other plants mostly along NWB between

Randolph Road and New Hampshire Avenue. Since April 2010 he has been a County Weed Warrior Supervisor and leads volunteers in cutting invasives on the fourth Saturday of the month at Burnt Mills (NWB and Route 29). Larry retired in March 2008 after 32 years as an economist with the U.S. Office of Management and Budget.

Elaine Lamirande



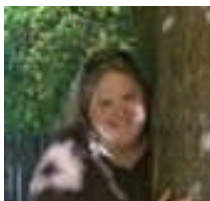
Elaine lives in the middle section of the Northwest Branch and joined the group in 2005. She has been co-Vice President of the Middle section since 2006. In 2009 she began running the Woodmoor Green Team, which encourages homeowners to adopt an environmentally friendly lifestyle that is easy on the wallet, family, and eyes. She has organized several rain garden and conservation landscaping projects in her neighborhood. She would like to see more people become active with the NNWB by focusing on a few projects with high impact/benefit that people are interested in. Elaine works as a biologist at the National Institutes of Health in Bethesda, MD.

Glenn Welch



I have been living in the DC area since 1986. We moved into the NW Branch watershed in 2000, where sitting out back at night after painting all evening I heard a very loud animal nearby. With a little searching, after lifting a rock I found a gray treefrog, and so I began to develop a keener interest in the stream behind us, Bel Pre Creek, which flows into the NW Branch just above Randolph Rd. In 2005 in a local Beltsville paper there was an announcement about a new citizens group forming supporting Beaverdam Creek, which runs through the USDA property where I work (and am the chair of their Ecology Committee). At BCWWG's 1st meeting Bill Howard, the previous NNWB president, spoke about forming a new group and invited me to join NNWB. So in one evening I ended up in two watershed groups. I am still on the board of BCWWG and I was on the board of NNWB for several years. For the NNWB I started and am the team leader of a water quality monitoring team in the NW Branch operating under the ANS invertebrate monitoring program. We've been at it about a year now, monitoring our site #38 near the trail crossing at Kemp Mill Rd.

Tiffany Wright



Tiffany Wright has lived in the Lockridge Drive subwatershed of NWB (a half mile from the mainstem) for about two years and serves on the North Four Corners Civic Association Board. Tiffany is currently the Watershed Manager for the City of Bowie. After receiving her Bachelors in Marine Science from Coastal Carolina University, she spent 7 years at the Center for Watershed Protection. In her spare time, she enjoys North Four Corners Park, listening to music, playing with her cats, and winning board games with her friends. Tiffany would like to do with NNWB what she does for a living--increase watershed awareness and stewardship among folks who live, work, and play in the Northwest Branch watershed.